

# G OVERNORS A MERICA C ORP.®

Distinction in the World of Engine Governing & System Controls



Governors

Actuators

Magnetic Pickups

Gaseous Control Systems

Generator Controls

**Product Catalog**  
07-29-2016 PMB7040

ACTUATORS.....	3-7
THROTTLE BODY (T1,T2,T4).....	3
INTEGRATED PUMP MOUNTED.....	4
INTEGRATED ENGINE MOUNTED.....	5
UNIVERSAL.....	6
ACCESSORIES.....	7
GOVERNORS.....	8-11
DIGITAL.....	8
ANALOG.....	9,10
ACCESSORIES.....	8,11
MAGNETIC SPEED PICKUP.....	12-13
ACCESSORIES.....	13
GENERATOR ACCESSORIES.....	13-14
INSTRUMENTATION.....	15
ACCESSORIES.....	15
FUEL & IGNITION MANAGEMENT.....	15-19
AFR.....	15,16,17
LEAN BURN ADAPTER KIT.....	17
ICM.....	18,19

# ACTUATORS

## DESIGNED TO OUT LIVE THE LIFE OF THE ENGINE

High performance is achieved when a speed control system incorporates a GAC actuator coupled with a GAC speed controller. The design baseline for GAC actuators incorporates fast responses, multi-voltage usage, and proven reliability. All of GAC actuators are easy to install with no maintenance required.

### THROTTLE BODY

The ATB Series integral throttle body electric actuators are designed to control the air or air/fuel mixture to a gas or gaseous-fueled engine. The ATB Series actuator directly drives an integrated throttle plate, which is ensured to return to the minimum fuel position with a spring return when the actuator becomes de-energized. Units are available with throttle plate position feedback sensor, higher temperature rating, and internal sealing for turbo-charged applications.

#### ATB T1 Series



- 12 or 24 VDC
- 25mm to 40mm Bore Size
- Packard Connector
- Sealed to 5.0 Bar

Product No.	Description
ATB251T1N-12 or -24	25mm / Sealed
ATB301T1N-12 or -24	30mm / Sealed
ATB351T1N-12 or -24	35mm / Sealed
ATB401T1N-12 or -24	40mm / Sealed
ATB251T1F-12 or -24	25mm / Sealed / Position Feedback Sensor
ATB301T1F-12 or -24	30mm / Sealed / Position Feedback Sensor
ATB351T1F-12 or -24	35mm / Sealed / Position Feedback Sensor
ATB401T1F-12 or -24	40mm / Sealed / Position Feedback Sensor

#### ATB T2 Series



- 12 or 24 VDC
- Position Indicator Available
- 45mm to 65mm Bore Size
- Packard Connector
- Sealed to 5.0 Bar

Product No.	Description
ATB452T2N-12 or -24	45mm / Sealed
ATB552T2N-12 or -24	55mm / Sealed
ATB652T2N-12 or -24	65mm / Sealed
ATB452T2N14-12 or -24	45mm / Sealed / High Temperature
ATB552T2N14-12 or -24	55mm / Sealed / High Temperature
ATB652T2N14-12 or -24	65mm / Sealed / High Temperature
ATB452T2F14-12 or -24	45mm / Sealed / High Temperature / Position Feedback Sensor
ATB552T2F14-12 or -24	55mm / Sealed / High Temperature / Position Feedback Sensor
ATB652T2F14-12 or -24	65mm / Sealed / High Temperature / Position Feedback Sensor

#### ATB T4 Series

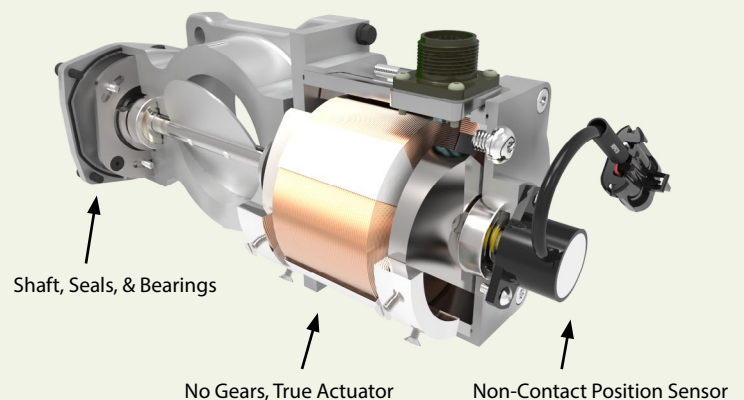


- 24 VDC
- 75mm to 120mm Bore Size
- MIL Connector
- Sealed to 5.0 Bar, High Temp

Product No.	Description
ATB75T4N14-24	75mm / High Temperature / Sealed
ATB85T4N14-24	85mm / High Temperature / Sealed
ATB95T4N14-24	95mm / High Temperature / Sealed
ATB110T4N14-24	110mm / High Temperature / Sealed
ATB120T4N14-24	120mm / High Temperature / Sealed
ATB75T4F14-24	75mm / High Temperature / Sealed / Position Feedback Sensor
ATB85T4F14-24	85mm / High Temperature / Sealed / Position Feedback Sensor
ATB95T4F14-24	95mm / High Temperature / Sealed / Position Feedback Sensor
ATB110T4F14-24	110mm / High Temperature / Sealed / Position Feedback Sensor
ATB120T4F14-24	120mm / High Temperature / Sealed / Position Feedback Sensor

ATB T4 Series now includes bore sizes down to 75mm. For 75mm ATB T3 contact GAC.

ATB T4 Series



#### ATB Feedback Upgrade Kits

Product No.	Description
KT552	Add-On Kit - T2 / T3 Series
KT555	Add-on Kit - T1 Series
KT556	Add-on Kit - T4 Series

See Actuator Accessories for Mating Connector / Harness & Installation Items.

# PUMP MOUNTED

GAC's Pump Mounted Actuators are field proven proportional actuators designed to mount directly to fuel injection pumps to achieve an integrated proportional servo fuel package. Since the design has no sliding parts and its components are sealed; outstanding reliability results with no maintenance required.

## 100 Series



- For Stanadyne 'D' Series (DB, JDB, DC, DB2, DB4, DM2, DM4) Pumps
- Packard Connector

Product No.	Description
ADC100-12 or -24	12 or 24 VDC / Mounting Gasket GA102 Included
GA102	Mounting Gasket for 100 Series
HW13-001	5 Star Torx Bit / Stanadyne

## 103 Series



- For Delphi DPG, DPGE, and DP210G Pumps
- Packard Connector

Product No.	Description
ADD103B-12 or -24	12 or 24 VDC / Mating Connector Included

## 137 Series



- Shangdong Kangda BQ Style (BH4Q / BH6Q)
- Packard Connector

Product No.	Description
ADD137BQK-R-12 or -24	12 or 24 VDC / Right Side Stop Assembly / Installation Kit Included

## 175/176 Series



- For Bosch 'P' and 'A' Style Pumps
- Connects Directly to the Fuel Rack
- Manual Shut-Off Mechanism
- Packard Connector

Product No.	Description
ADD175A-12 or -24	12 or 24 VDC / Bosch 'P' Pump / Installation Kit KT289 Included
ADD176A-12 or -24	12 or 24 VDC / Bosch 'A' Pump / Left Hand Rack
ADE176AA-12 or -24	12 or 24 VDC / Bosch 'A' Pump / Left Hand Rack / Mating Connector / Cold Start Assist Solenoid

Available Installation Kits on Page 7

## 275 Series



- Bosch 'P' 3000 - 7000 Fuel Injection Pump
- For Pumps on Engines up to 12-Cylinders
- Manual Shut-Off Lever

Product No.	Description
ACB275C	24 VDC / MIL Connector / Designed for MTU
ACB275H	Multi VDC / MIL Connector
ACE275H-24	24 VDC / Packard Connector
ACE275HD-24	24 VDC / Packard Connector / Heavy Duty Bearing Retention
ACE275J-24	24 VDC / High Torque Return Spring with Oil Drain Fitting
ACE275K	24 VDC / Heavy Duty Bearing Retention / Packard Connector / Position Feedback Sensor

Available Installation Kits on Page 7

## 295 Series

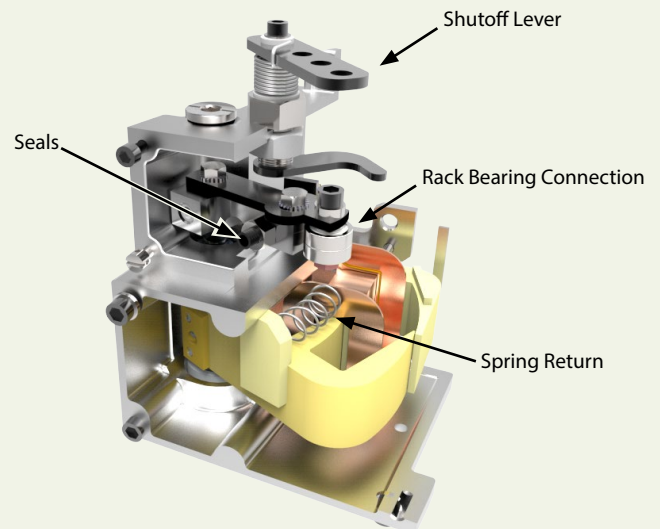


- Bosch 'P' 9 and 10 Pumps
- For Pumps on Engines up to 16 Cylinders
- Packard Connector

Product No.	Description
ACE295-24	24 VDC / Standard Unit
ACE295F-24	24 VDC / Position Feedback Sensor

Available Installation Kits on Page 7

## 175 Series



See Actuator Accessories for Mating Connector / Harness & Installation Items.

## ENGINE MOUNTED

GAC's Engine Mounted Actuators exhibit a high quality construction design for high temperature applications and are uniquely optimized to outperform externally mounted electric actuators and other competitive designs. Since GAC's fast responding fuel control design has no sliding parts and its components are sealed; outstanding reliability results with no maintenance required.

### 110 Series



- For Deutz 1011 and 2011 Engines
- For 2,3, and 4 Cylinder Engines

Product No.	Description
ACD110-12 or -24	12 or 24 VDC / Deutsch Connector

### 180 Series



- Deutz 1012/1013 & 2012 Engines
- Volvo 520/720 Engines
- Packard Connector

Product No.	Description
ADD180G-12 or -24	12 or 24 VDC / With Mating Connector / Includes Installation Kit KT188

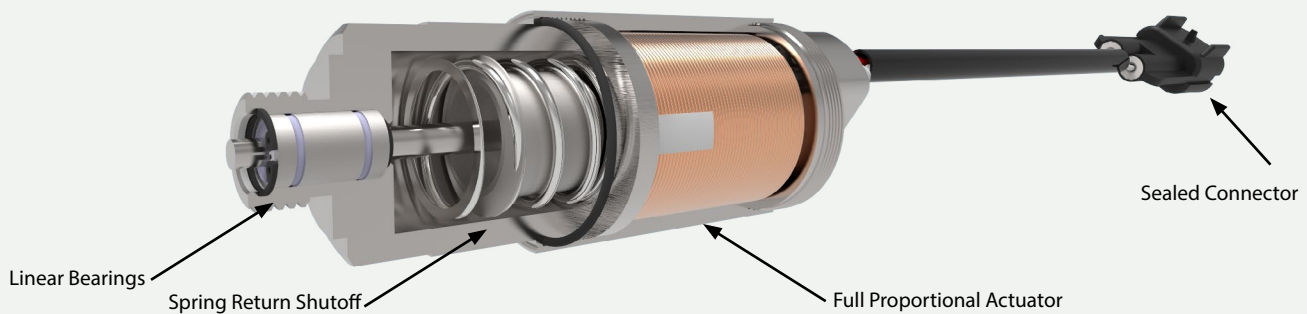
### ALR Series



- Pull Electrical Linear Actuators
- Mounts Directly to Engine's Fuel Pump in Place of Stop Solenoid
- Utilizes Precision Linear Ball Bearings instead of Bushings
- Variable or Fixed Speed Control Over the Entire Engine Speed Range

Product No.	Description
ALR160-S04-12 or -24	12 or 24 VDC / Packard Connector / Shibaura N843-C, N844L-C, N844LT-C
ALN190-F04-12 or -24	12 or 24 VDC / Normal Acting - Push / Packard Connector / Farymann 18 W Series
ALR190-I03-12 or -24	12 or 24 VDC / Male Faston Terminals / Isuzu L-Series 3LB1 3LD1 3LD2 4LE1 4LE2
ALR190-K04-12 or -24	12 or 24 VDC / Packard Connector / Kubota Super 05 Series, D905, D1005, D1105, D1105-T, V1305, V1505, V1505-T, and V3 Industrial Series V3300, V3600, V3600-T, V3800 (Not DI-T)
ALR190-KV03-12	12VDC / Packard Connector without Mating Connector / Kubota 03 Series V2003, V2203, V2403
ALR190-KV07-12	12VDC / Packard Connector without Mating Connector / Kubota 07 Series V2607, V3007, V3307
ALR190-M04-12	12 VDC / Packard Connector / Mitsubishi L-Series L2E, L3E, and S-Series S3L, S3L2, S4L, S4L2,
ALR190-P04-12 or -24	12VDC / Packard Connector without Mating Connector / Perkins 404D-15, 404D-22 & Caterpillar C2.2T, C3.4
ALR190-P403-12 or -24	12VDC / Packard Connector without Mating Connector / Perkins 403D-15, 403D-15T & Caterpillar C1.7
ALR190-Y04-12 or -24	12VDC / Packard Connector without Mating Connector / Yanmar TNV Series 2TNV70, 3TNV70, 3TNV76, 3TNV82A, 3TNV84, 3TNV84T, 3TNV88, 4TNV84, 4TNV94L, 4TNV88, 4TNV98, 4TNV98T & Isuzu C-Series 2CA, 3CA, 3CB, 3CD, 3CDT

ALR Series



See Actuator Accessories for Mating Connector / Harness & Installation Items.

# UNIVERSAL

GAC's Universal actuators are proportional electro servo designed for mechanical actuation of fuel system control levers. GAC's external actuators are simple to install and possess no sliding parts, resulting in outstanding reliability and no maintenance required.

## 104 Series



- Small Engines (ex. Briggs & Stratton Engines, Kohler 12 - 30 HP Engines)
- < 25 msec Response
- 0.3 lb-ft [0.4 N-m] Torque
- 25° Rotation

Product No.	Description
ADD104-12 or -24	12 or 24 VDC / Packard Connector

## 120 Series



- Rotary Actuators
- For Engines up to 150 hp
- 1.0 lb-ft [1.35 N-m] Torque
- For Small Inline Fuel Pumps or Carburetors

Product No.	Description
ACB120	Multi VDC / MIL Connector / 25° Rotation / Sand-Cast Housing
ADB120	Multi VDC / MIL Connector / 25° Rotation / Die-Cast Housing
ADB120E4	Multi VDC / MIL Connector / Fuel Metering Valve / Cummins PT Fuel System
ADC120S-12 or -24	12 or 24 VDC / Commercial Connector / 25° Rotation / Serrated Shaft
ADD120S-12 or -24	12 or 24 VDC / Packard Connector / 25° Rotation / Serrated Shaft

## 335 Series



- 2.90 lb-ft [3.9 N-m] Torque
- 65° Rotation
- MIL Connector

Product No.	Description
ADB335-24	24 VDC / Standard Unit
ADB335F-24	24VDC / Position Feedback Sensor

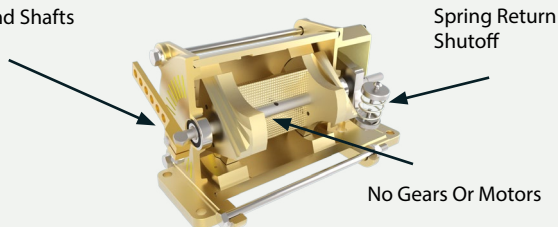
## 2001 Series



- Rotary Actuator
- 12.0 lb-ft [16.3 N-m] Torque
- < 80 msec Response
- For 400 - 1800 hp Engines

Product No.	Description
ACB2001	24 VDC / 35° Rotation / Includes Lever LE2000

Heavy Duty Bearings and Shafts



## 225 Series



- 2.2 lb-ft [3.0 N-m] Torque
- 25° Rotation
- < 45 msec Response
- For Multi-Plunger Fuel Pumps & Carburetors

Product No.	Description
ACB225	Multi VDC / MIL Connector / Sand-Cast Housing
ADB225	Multi VDC / MIL Connector / Die-Cast Housing
ADC225GS-12 or -24	12 or 24 VDC / Commercial Connector / Serrated Shaft / Lesser Rate Return Spring
ADC225GAS-12 or -24	12 or 24 VDC / Commercial Connector / Serrated Shaft / Lesser Rate Return Spring / Extended Stop 26° Rotation
ADC225JS-12 or -24	12 or 24 VDC / Commercial Connector / Serrated Shaft / Greater Rate Return Spring
ADC225KS-24	24 VDC / Commercial Connector / Serrated Shaft / High Temperature Applications
ADC225S-12 or -24	12 or 24 VDC / Commercial Connector / Serrated Shaft
ADD225GSC-12 or -24	12 or 24 VDC / Packard Connector / Lesser Rate Return Spring / With Mating Connector

## ALN Series



- Push Linear Actuators
- High Quality Anti-friction Bearings
- Replaces Competitive Models
- 22mm Stroke

Product No.	Description
ALN025-12 or -24	12 or 24 VDC / 6.5 lbf. [3.0 kg] / 0.25 ft-lb [0.34 J] Work / Male Push-On Terminals
ALN050-12 or -24	12 or 24 VDC / 13.0 lbf. [6.0 kg] / 0.50 ft-lb [0.68 J] Work / Male Push-On Terminals

Available Installation Kits on Page 7

See Actuator Accessories for Mating Connector / Harness & Installation Items.

# ACCESSORIES - ACTUATORS

## Cable Harnesses



Product No.	Description
CH1203	ACB/ADB Actuators - 12ft [3.7m] - 6 pin MIL Connector
CH1206	ADC Commercial Actuators - 4ft [1.2m] Harness
CH1210	Actuator - 12ft [3.7m] - 90° Connector (MIL)
CH1215	Packard - Actuator Mating Half
CH1515	AB Position Sensor Mating Half - 6ft [1.8m] Shielded / Feedback Sensor
CH251-2134	ADC Commercial Actuators - 7ft [2.1m] Harness / 2-Terminal

## Mating Connectors



Product No.	Description
EC1000	Actuator Straight / Military Style Connector
EC1010	Actuator 90° / Military Style Connector
EC1300	ADD Actuators - Packard Mating Connector Kit
EC1310	ADD Actuators - Packard Connector Replacement Kit
EC1515	ACE275K, ACE295F, ATBT2/T3-F, 175/176AF - AB Feedback Sensor Mating Half Connector
EC1523	ATB T1/T4-F, ADB335 Actuators - Feedback Sensor Mating Connector Kit - 3 Terminals

## Threaded Rod



Product No.	Description
RD102	1/4 - 28 - Precut to 12 in. [0.3m] - Zinc Plated
RD233	M6 Thread - Precut to 8.75 in. [222mm] - Zinc Plated

## Levers



Product No.	Description
LE1400-2	4.3in.[110mm] - ACB/ADB Actuators - 1/4in. [6.35mm] Holes / Serrated Shaft
LE1400-4	3.3in.[84mm] - ACB/ADB Actuators - 1/4in[6.35mm] Holes / Smooth Shaft

## Installation Kits



KT289



KT275



KT295



KT232M

Series	Product No.	Description
ALN Series	BK265	ALN025 Mounting Bracket
ALN Series	BK266	ALN050 Mounting Bracket
ALN Series	KT130	Clevis Kit Only - ALN025/050
ALN Series	KT231M	ALN050 Installation Kit - Bosch RSV - Left Side
ALN Series	KT232M	ALN050 Installation Kit - Bosch RSV - Right Side
175 Series	KT153	Motorpal Mi Series - PP4M10P1N13021 Fuel Injection Pumps - Plate, Linkage, and Mounting Hardware
175 Series	KT175-RS-R	ADD175 Series / Bosch 'RSV' Pump / Right Hand Rack / Mounts to Mechanical Governor Housing
175 Series	KT175-RS-R-Zexel	ADD175 Series / Bosch RSV / RH Rack w/ Pump Gasket / ZEXEL / Mounts to Mechanical Governor Housing
175 Series	KT197	ADD175 To Bosch EDC Governor
175 Series	KT289	ADD175 / Installation Kit / for Bosch 'P' Pump
175 Series	KT-BYC	Adapter Kit - BYC ASIMCO Pumps - A, AD, P, P7100, PB197 - Adapter Plate, Gasket and Seal
176 Series	KT176A	Bosch 'A' Pump / Bearing Retainer Plate
176 Series	KT176-A-RS-L	176 Series - Bosch 'A' Pump / LH Rack / Mounts to Mechanical Governor Housing
176 Series	KT291	ADD/ADE176AA Installation Kit
180 Series	KT188	Installation Kit / Included With Actuator / Freeze Plug & Hardware
225 Series	BK267	Installation Bracket - 225 Series to Woodward Dyna 8000 Footprint
275 Series	KT275	ACB275 - Bosch 3000 Pump / Camshaft Bearing Kit
275 Series	KT276	ACB275 - Bosch 7000 Pump / Camshaft Bearing Kit
275 Series	KT278-1	ACB275 Actuators - RP21 Pump Kit
275 Series	KT3000-MT	MTU - Bosch P 3000 Bearing Retainer Kit - Plate, Gasket, Seal, Shims and Installation Hardware
275 Series	KT7001-MT	MTU - Bosch P 7001 Bearing Retainer Kit - Plate, Gasket, Seal, Shims and Installation Hardware.
295 Series	KT295	295 Installation Kit - Spare (Included with Actuator) - Rack Linkages and Installation Hardware

## Bearing Rod Ends



Product No.	Description
BR200	1/4" I.D. - 1/4-28 Thread
BR300	M5 I.D. and Thread
BR400	M6 I.D. and Thread
BR500	M8 I.D. and Thread

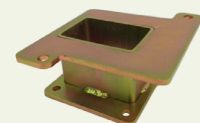
### BK Series



BK266 with ALN050



BK265



BK267

# Governors

GAC's Speed Control Units are precise speed controls designed and manufactured in various configurations to meet application requirements using the latest analog and digital control technologies. Reverse battery polarity and fail-safe protection in the event of loss of speed sensor signal or battery voltage is incorporated in every GAC Speed Control Unit. A wide variety of application needs can be satisfied with GAC's constant or variable speed governing, in isochronous or droop operation. All circuit boards are hard potted or conformally coated to be vibration and moisture resistant.

## Digital

### EEG Series

**NEW!**



- Improved & Simplified PID
- Fault Protection & Logging
- Variable, Droop, & Isochronous Governing
- Load Sharing & Synchronizing Auxiliary Input
- Replaces EDG5500
- CE Approved

Product No.	Description
EEG6500	Multi-VDC / Built-In Display / Works with all GAC Actuators
EEG6550	Multi-VDC / Built-In Display / Built-In Overspeed Switch Output

### SDG Series



- Smart Digital Governor
- Three Fixed and 1 Variable Speed
- Overspeed Shutdown Protection
- SmartVU PC Software
- CE Approved

Product No.	Description
SDG514-01-01	Multi VDC / Deutsch Connector / Resistive Variable Speed Input (5K $\Omega$ )
SDG524-01-01	Multi VDC / Deutsch Connector / 0-5 VDC Variable Speed Input

### EDG Series

These governors are based on GAC's EDG™ algorithm, incorporating all of the features and performance of GAC analog governors along with the stability, accuracy, flexibility and communication capabilities for which digital controls are known.



EDG5500



EDG6000



IGA225S

- No Analog Drift
- Variable Speed Governing
- GAC AUX/Load Sharing
- Overspeed Sensing
- Adjustable Starting Fuel Strategy (Black Smoke Reduction)
- CE approved

Product No.	Description
EDG5500	LCD User Interface / Fast Set-Up With 5 Push Buttons / Service Only Replaced by EEG6500
EDG6000	Multiple PID Control / IP67 Sealed Case & Connector / RS232 and CAN J1939 Communications / SmartVU PC Software
IGA225S-12 or -24	12 or 24 VDC / ADC225S with Integrated EDG6000

## ACCESSORIES

### Cable Harnesses



Product No.	Description
CH1330	Cable Harness for the SDG514 / SDG524
CH1520	Cable Harness for the EDG6000

### Mating Connectors



Product No.	Description
EC1330	Deutsch 12 pos. Mating Connector for SDG514 / SDG524
EC1502	14-Pin Mating Connector for EDG6000

### Test Equipment



TSE050



TSE307

Product No.	Description
TSE050	Magnetic Speed Pickup Simulator
TSE307	EDG6000 Programming Interface



## FUSION Series

The ESD5500-II analog speed controller is the first in GAC's next-generation Fusion Series line of controllers. The Fusion Series updates and merges many ESD control functions into a single versatile control.



ESD5500-II

- Gaseous & Diesel Applications
- Low and Normal Current
- Isochronous, Variable, & Droop Operation
- Speed Ramping & Starting Fuel
- Selectable Dither Function, Lead/Lag, & Soft Coupling
- Auxiliary Input For Load Sharing & Synchronizing
- LED Indicators (MSP, Battery, Actuator)

### Can be used in place of:

ESD5111	ESD5120
ESD5131	ESD5500E
ESD5520E	ESD5526E
ESD5528E	

## ECC Series



- Isochronous Operation
- Full PID Setting
- No Magnetic Speed Pickup Needed
- Governs from AC Generator Frequency Signal

Product No.	Description
ECC328-12 or -24	12 or 24 VDC / Light-Force (Low Current)

## ESD2200 Series



- Isochronous Operation
- Adjustable PID Functions
- Speed Trim Input
- Hard Potted
- CE Approved

Product No.	Description
ESD2210-12 or -24	12 or 24 VDC / Standard Unit
ESD2241-24	24 VDC / Idle Circuit
ESD2244-12 or -24	12 or 24 VDC / Light-Force (Low Current)

## ESD1000 Series



- Isochronous Operation Only
- Gain Adjustment
- Hard Potted
- Terminal Strip or Leads
- CE Approved

Product No.	Description
ESD1000-12 or -24	12 or 24 VDC / Wire Leads
ESD1100-12 or -24	12 or 24 VDC / Terminal Strip

## ESD2400 Series



- Isochronous Operation
- Adjustable PID Functions
- Speed Trim & Idle Control
- Anti Wind-Up Circuit (Gaseous Engines)
- Hard Potted
- CE Approved

Product No.	Description
ESD2401-12 or -24	12 or 24 VDC / Standard Unit
ESD2402-12 or -24	12 or 24 VDC / Light-Force (Low Current)

\* For Gaseous or Diesel Applications

## ESD2100

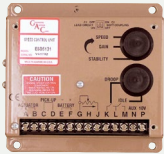


- Isochronous Operation Only
- Adjustable PID Functions
- Frequency Trim Input

Product No.	Description
ESD2110	Multi VDC / Standard Unit

# Analog

## ESD5100 Series



- Isochronous, Variable, and Droop
- Adjustable PID Functions
- Speed Trim Input & Idle Control
- Auxiliary Input / +10V Supply
- CE Approved

Product No.	Description
ESD5111	Multi VDC / Standard Unit
ESD5111T	Multi VDC / Temperature Compensated
ESD5119	Multi VDC / Cummins EFC Reverse Acting
ESD5120	Multi VDC / Light-Force (Low Current)
ESD5131	Multi VDC / Selectable Soft Coupling and Lead Circuit
ESD5160	Multi VDC / Expanded Frequency Range 10.5kHz / EFC Reverse Acting / Designed For Fire Pumps

## ESD5221



- Isochronous, Variable, & Droop
- Adjustable PID Functions
- Speed Trim & Idle Control
- Lead Circuit
- Auxiliary Input / +10V Supply
- CE Approved

Product No.	Description
ESD5221	Multi VDC / Single Element Speed Switch - Overspeed

## ESD5300 Series



- Isochronous, Variable, & Droop
- Adjustable PID Functions
- Dual Gain (Idle, Rated)
- Speed Trim & Idle Control
- Starting Fuel & Speed Ramping
- Overspeed & Crank Switches
- Soft Coupling & Lead Circuit
- Auxiliary Input / +10V Supply

Product No.	Description
ESD5330	24 VDC / Standard Unit
ESD5340	24 VDC / Full-Fuel Starting Aid

\* Ideal for ACB2001 Actuator

## ESD5500E Series



- Isochronous, Variable, & Droop
- Speed Ramping & Starting Fuel
- Soft Coupling & Lead Circuit
- Adjustable Idle Control
- Auxiliary Input / +10V Supply
- CE Approved

Product No.	Description
ESD5500E	Multi VDC / Standard Unit
ESD5520E	Multi VDC / Light-Force (Low Current)
ESD5522E	Multi VDC / Light-Force (Low Current) / Enhanced Droop / Smoke Limiting / Suitable For Cummins EFC Forward Acting (Normally Closed)
ESD5526E	Multi VDC / Light-Force (Low Current) / Anti Wind-Up Circuit NOTE: For use with Small Bore T1 & T2 ATB Gaseous Applications
ESD5528E	Multi VDC / Anti Wind-Up Circuit / NOTE: For use with Large Bore T3 & T4 ATB Gaseous Applications

## ESD5550/5570 Series



- Isochronous, Variable, & Droop
- Built-In Speed Switch - Overspeed
- Speed Ramping & Starting Fuel
- Soft Coupling & Lead Circuit
- Auxiliary Input / +10V Supply
- CE Approved

Product No.	Description
ESD5550	Multi VDC / Standard Unit
ESD5550M	Multi VDC / Expanded Gain & Stability Range (Replace Ghana Controls)
ESD5570	Multi VDC / Light-Force (Low Current)

## SSW Series



- Multi VDC Operation
- Tachometer Output
- Overspeed Test Function
- Indicator LEDs

Product No.	Description
SSW674	One Element Speed Switch (Overspeed)
SSW675	Two Element Speed Switch (Overspeed/Crank)
SSW676	Three Element Speed Switch (Overspeed/Crank/Parallel)

# ACCESSORIES - GOVERNORS - ANALOG

## Modules



RSC671



DFM100



DDM101

Product No.	Description
RSC671	Speed Ramp Controller - Ramp Up / Down with Speed Range / Variable Control
RSC672	Speed Ramp Controller - Ramp Up / Down Generator Set Applications
DDM101	Dual Driver Module - Drives 2 Actuators Simultaneously (Gaseous or Diesel)

DFM100, Dual Fuel Module - Contact GAC

## Potentiometers



Product No.	Description
TP501	1 Turn - 5K $\Omega$ with Knob
TP502	10 Turn - 5K $\Omega$ with Knob
TP503	10 Turn - 5K $\Omega$ with Locking Shaft
TP504	1 Turn - 20K $\Omega$ with Knob / Droop Control
TP508	10 Turn - 20K $\Omega$ with Locking Shaft
TP509	10 Turn - 20K $\Omega$ with Knob
TP510	10 Turn - 1K $\Omega$
TP511	10 Turn - 10K $\Omega$
TP521	10 Turn - 1K $\Omega$ with Multiple Variable Speed Control / Vernier Dial

# Magnetic Speed Pickups



	Part. No.	Thread Length	Harness Length	Connector	with Mating Connector	Resistance
<b>3/8 - 24 UNF Threaded</b>	MSP6729	2.7in [69mm]	6.0ft [1.8m] Shielded Cable	Flying Leads	No	550-960Ω
	MSP6730	1.7in [43mm]	6.0ft [1.8m] Shielded Cable	Flying Leads	No	550-960Ω
	MSP6731	4.0in [102mm]	6.0ft [1.8m] Shielded Cable	Flying Leads	No	550-960Ω
	MSP6737	2.7in [69mm]	6.0in [152mm] Shielded Cable	Push-On Terminals	No	550-960Ω
	MSP6740	1.7in [43mm]	6.0ft [1.8m] Shielded Cable	Packard Connector	No	550-960Ω
	MSP6742	2.7in [69mm]	1.0ft [0.3m] Shielded Cable	Flying Leads	No	550-960Ω
<b>5/8 - 18 UNF Threaded</b>	MSP674	3.00in [76mm]	Integrated	MIL Connector	No	High Output 913Ω
	MSP675	3.19in [81mm]	7.0in [178mm]	Flying Leads	No	144-250Ω
	MSP676	5.00in [127mm]	12.0in [305mm]	Flying Leads	No	144-250Ω
	MSP677	3.00in [76mm]	Integrated	MIL Connector	No	144-250Ω
	MSP678	4.86in [123mm]	Integrated	MIL Connector	No	144-250Ω
	MSP679	3.00in [76mm]	Integrated	MIL Connector	Yes	144-250Ω
	MSP6710	4.86in [123mm]	Integrated	MIL Connector	Yes	144-250Ω
	MSP6719	2.37in [60mm]	1.0ft [0.3m]	Flying Leads	No	144-250Ω
	MSP6720	3.86in [98mm]	1.0ft [0.3m]	Flying Leads	No	144-250Ω
	MSP6721	3.19in [81mm]	2.75in [70mm]	Automotive Connector	No	144-250Ω
	MSP6721C	3.19in [81mm]	2.75in [70mm]	Automotive Connector	Yes	144-250Ω
	MSP6722	2.37in [60mm]	6.00in [152mm]	Push-On Terminals	No	144-250Ω
	MSP6728	3.19in [81mm]	6.25in [159mm]	Packard Connector	No	144-250Ω
	MSP6728C	3.19in [81mm]	6.25in [159mm]	Packard Connector	Yes	144-250Ω
	MSP6732	3.16in [80mm]	3.25in [83mm]	Dual Packard Connector	No	144-250Ω
	MSP6732C	3.16in [80mm]	3.25in [83mm]	Dual Packard Connector	Yes	144-250Ω
MSP6743	3.50in [89mm]	Integrated	#8-32NC-2A Stud Terminals	No	High Output 1.2kΩ	
<b>3/4 - 16 UNF Threaded</b>	MSP6724	3.45in [88mm]	3.00in [76mm]	Automotive Connector	No	144-250Ω
	MSP6724C	3.45in [88mm]	3.00in [76mm]	Automotive Connector	Yes	144-250Ω
	MSP6734	3.45in [88mm]	4.25in [108mm]	Flying Leads	No	144-250Ω
	MSP6735	3.45in [88mm]	3.00in [76mm]	Packard Connector	No	180Ω
	MSP6744	2.30in [58mm]	Integrated	#8-32NC-2A Stud Terminals	No	High Output 1.2kΩ
	MSP6751	5.0in [127mm]	Integrated	#8-32NC-2A Stud Terminals	No	High Output 1.3kΩ
<b>M16 x 1.5 UNF Threaded</b>	MSP6714	3.00in [76mm]	Integrated	MIL Connector	No	144-250Ω
	MSP6715	3.00in [76mm]	Integrated	MIL Connector	Yes	144-250Ω
	MSP6723	3.13in [79mm]	3.00in [76mm]	Automotive Connector	No	144-250Ω
	MSP6723C	3.13in [79mm]	3.00in [76mm]	Automotive Connector	Yes	144-250Ω
	MSP6739	3.13in [79mm]	3.00in [76mm]	Packard Connector	No	144-250Ω
	MSP6745	5.00in [127mm]	Integrated	MIL Connector	No	144-250Ω
<b>M18 x 1.5 UNF Threaded</b>	MSP6741	2.29in [58mm]	9.00in [228mm]	Metri-Pack 150 Series (Unsealed)	No	N/A
	MSP6746	2.70in [69mm]	18.00in [0.46m]	Automotive Connector	No	N/A

## ACCESSORIES - MAGNETIC SPEED PICKUPS

### Cable Harnesses



Product No.	Description
CH1204	MSP Military-Style (Amphenol) Sensors - 10 ft. [3m] Shielded Harness / Straight Connector EC1100 / 2-Terminal
CH1205	MSP Military-Style (Amphenol) Sensors - 10 ft. [3m] Shielded Harness / 90° Connector EC1110 / 2-Terminal
CH1206	MSP Automotive Sensors - 4 ft. [1.2m] Unshielded Cable / 2-Terminal
CH1207	MSP Automotive Sensors - 10 ft. [3m] Shielded Cable / 2-Terminal
CH1211	MSP Military-Style (Amphenol) Sensors - 27 ft. [8.2m] Shielded Harness / Straight Connector EC1100 / 2-Terminal
CH1219	MSP Packard Sensors - 10 ft. [3m] Shielded Harness / 2-Terminal
CH1235	MSP Military-Style (Amphenol) Sensors - 13 ft. [4m] Shielded Harness / Straight Connector EC1100 / 2-Terminal

### Mating Connectors



Product No.	Description
EC1100	MSP Military-Style (Amphenol) Sensor - Mating Connector Kit / With Straight Cable Clamp & Weather Boot / 2-Terminal
EC1110	MSP Military-Style (Amphenol) Sensor - Mating Connector Kit / With 90° Cable Clamp & Weather Boot / 2-Terminal
EC1350	MSP Packard Sensors - Mating Connector Kit / 2-Terminal
EC1360	MSP Packard Sensors - Connector Kit Replacement / 2-Terminal
EC1518	MSP6741 - Mating Connector Kit / 2-Terminal / Metri-Pack 150 Series (Unsealed)

# Generator Accessories

## Load Anticipation, Sharing, and Synchronizing



LSM672



LSM100



LSM201

- All Electric Sensing
- Accurately Measures True Power
- Load Anticipation and Droop Adjustment
- Isochronous Load Sharing

Product No.	Description
LAM100	Load Anticipation Module / Hard Potted / Measures Generator Line Current Through CT and Signals Speed Control to Compensate / Adjustable Time Constant & Amplitude
LSM100	10 VDC (From Speed Control) / Isochronous Load Sharing / Load Anticipation / Droop
LSM201	(CE) 24 VDC / Isochronous Load Sharing / Load Anticipation / Power Monitors Adjustment Control / Power Ramping and Control / Droop / Forward and Reverse Power Monitoring and Reset Capability
LSM201N	24 VDC / Isochronous Load Sharing / Load Anticipation / Power Monitors Adjustment Control / Power Ramping and Control / Droop / Forward and Reverse Power Monitoring and Reset Capability
LSM672	(CE) 24 VDC / Isochronous Load Sharing / Forward and Reverse Power Monitoring and Reset Capability / Load Anticipation / Droop
LSM672N	24 VDC / Isochronous Load Sharing / Forward and Reverse Power Monitoring and Reset Capability / Load Anticipation / Droop
SYC6714	Multi VDC / Automatic Synchronizer With Sync Check Relay

## Interface Modules



EAM103



EAM108



EAM131

Module	Description		Interfaces Non GAC Product	To GAC Product
EAM100	24 VDC	5kΩ Trim Pot Input	Cummins EFC Speed Control	LSM / SYC
EAM101	24 VDC	5kΩ Trim Pot Input / Selectable 50/60Hz Operation	Barber Colman - Dyna 1 & 800 Speed Control	LSM / SYC
EAM103	24 VDC	Supplies the BC Dyna2 Load Sharing with +4 & +8VDC / Output of Dyna 2 is Amplified, Conditioned, and Level Shifted to Match Speed Controller Input	Barber Colman - Dyna 2 Load Sharing (80100, 80101, 80104, 80105)	ESD
EAM104	24 VDC	5V ±5VDC Input / 2.5V Nominal Output	Detroit Diesel DDEC 3 Controller	LSM / SYC
EAM105	24 VDC	5V ±5VDC Input / 0V ±5VDC Output From GAC LSM/SYC	Heinzmann EG or KG6-04/10-04 Speed Control	LSM / SYC
EAM108	24 VDC	Accepts Nominal 5V Input / 1.5VDC Output to 8290 Controller	Woodward (8290-038) Speed Control	LSM / SYC
EAM110	Multi VDC	Nominal 5V Input / 5V Output Based on Cummins QST Internal 5V Reference	Cummins QST30 & QSK45-78	LSM / SYC
EAM111	Multi VDC	0-10V Speed Range Input / 5V Narrow Trim Input / 4-20 or 0-20 mA Signal Output	MTU M-DEC	LSM / SYC
EAM113	Multi VDC	4 - 20mA / 5V Input / PWM Output	CAT HUEI System	LSM / SYC
EAM115	Multi VDC	5V Input / 2.5V Output Based on Perkins 5V Reference Signal	Perkins 1306-E87 7M351	LSM / SYC
EAM116	Multi VDC	Universal - Galvanic Isolation / 1x 0-5 VDC, 1x 0-10 VDC, 1x 4-20mA Input / 0-5 VDC Output	Universal	ESD / EDG / EEG
EAM120-24	24 VDC	5V ±5 VDC Input / 0VDC ±5 VDC Output	Woodward 2301A	LSM / SYC
EAM121-24	24 VDC	0 ± 3 VDC Input / Nominal 5V Output	Woodward Load Sharing & Synchronizing	ESD
EAM122-24	24 VDC	Nominal 2.875 VDC Input / 5V Input / 2.9V Output	Volvo EMS I & II EFI Control	LSM / SYC
EAM125	24 VDC	1-4 VDC Input / 4-20mA Output	Universal	Feedback Sensors
EAM127-24	24 VDC	Nominal 5 VDC Input / 1.6 VDC Output	Interface Module Scania S6 (EMS) EFI SY	LSM / SYC
EAM131	24 VDC	Universal / 4-20mA Input / 0-5VDC Output / Reverse Polarity	n/a	ESD / EDG / EEG
EAM208	24 VDC	Variable Speed DC Generator Control / Integrated Current Transformer / 200A Input / 0-8 VDC Output / Built-In Power Meter Output	n/a	ESD / EDG / EEG
EAM210	24 VDC	Universal / 4-20mA or 0-5VDC Load Sharing Input / 100% Max Duty Cycle Output	Caterpillar & Cummins	n/a

## Voltage Regulators



CVR63-4R

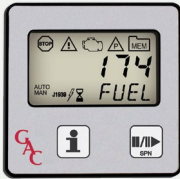
- Regulation Accuracy ±0.5% Steady State
- Low Voltage Build-Up, 6VAC
- Over Voltage and Internal Fuse Protection

Product No.	Description
CVR63-4R	Commercial Voltage Regulator / 4A 63V Field / Rear Facing Pots / Replaces Basler AVC63-4D & BE350, McPherson SS350, and Marathon SE350
CVR63-6	Commercial Voltage Regulator / 6A 63V Field

# Instrumentation

## J1939 Data Readers

GAC's low-cost JDR series of J1939 data readers allow users to monitor trouble codes and standard engine parameters. More advanced models support Tier IV engines with diesel particulate filters. Harsh applications are no match for JDR's rugged design. With installation and setup a breeze, users will be monitoring engine vital signs and configuring parameters in no-time.



JDR050



JDR050-IV



JDR100



JDR100-IV

- Wide Temperature Range
- Self Contained, No Configuration Software Required
- Built-in CAN bus Termination
- Customizable Overlay with OEM Logos

Product No.	Description
JDR050	J1939 Diagnostic Trouble Code Reader
JDR050-IV	J1939 Diagnostic Trouble Code Reader / Tier IV DPF Regen Control Capability
JDR100	J1939 Diagnostic Trouble Code Reader / 6 Live Engine Parameters
JDR100-IV	J1939 Diagnostic Trouble Code Reader / 7 Live Engine Parameters / Tier IV DPF Regen Control Capability

## ACCESSORIES



Cable Harness



Mating Connector

Product No.	Description
CH417-4572	15' Cable Harness / Mating Connector / Built-in CAN bus Termination Jumper
EC1331	Deutsch DT06-6S Mating Connector, Pins / Plugs for the JDR

## Fuel and Ignition Management System (FIMS)



The Air-Fuel Ratio (AFR) 200 Series and the Ignition Control Module (ICM) 200 Series controllers are part of GAC's comprehensive Fuel and Ignition Management System (FIMS) for gaseous-fueled, spark-ignited engines. The AFR200 performs closed-loop air-fuel ratio control using an exhaust oxygen sensor for feedback, in addition to providing a built-in engine speed governor with GAC's proprietary EDGE algorithm. Easy to configure, simple to install, and built for the extreme environments of industrial engines; GAC's AFR200 series delivers.

### AFR200 Series



- Integrated Venturi Mixer / Fuel Control
- Built-in Engine Speed Governor for GAC ATBs or Actuators
- 3 Fixed Speeds, 1 Variable Speed, 1 Auxiliary Speed Trim
- Free GAC SmartVU Software, No Special Adapter Needed

Prod. No.	Description
AFR210	One Oxygen Sensor Input and EGT (Type-K) Input
AFR211	Two Oxygen Sensor Inputs (Pre and Post Catalyst) and EGT (Type-K) Input

# AFR200 Series



Venturi Mixers Only			
MX24	Venturi Mixer Assembly / 2.0 in. [51mm] Air Inlet Hose Fitting / 24mm [0.95 in.] Throat Diameter / 5/8 in. [15.88mm] Fuel Inlet Hose Fitting		
MX32	Venturi Mixer Assembly / 2.5 in. [63.5mm] Air Inlet Hose Fitting / 32mm [1.27 in.] Throat Diameter / 5/8 in. [15.88mm] Fuel Inlet Hose Fitting		
MX36	Venturi Mixer Assembly / 3.0 in. [77mm] Air Inlet Hose Fitting / 36mm [1.42 in.] Throat Diameter / 3/4 in. [19.05mm] Hose Fitting		
MX42	Venturi Mixer Assembly / 3.0 in. [77mm] Air Inlet Hose Fitting / 42mm [1.65 in.] Throat Diameter / 3/4 in. [19.05mm] Hose Fitting		
MX48	Venturi Mixer Assembly / 3.5 in. [90mm] Air Inlet Hose Fitting / 48mm [1.89 in.] Throat Diameter / 1 in. [25.4mm] Hose Fitting		
MX54	Venturi Mixer Assembly / 3.5 in. [90mm] Air Inlet Hose Fitting / 54mm [2.14 in.] Throat Diameter / 1 in. [25.4mm] Hose Fitting		
MX54-V	Venturi Mixer Assembly / 3.5 in. [90mm] Air Inlet Hose Fitting / 54mm [2.14 in.] Throat Diameter / 1 in. [25.4mm] Hose Fitting / Two Inlets		
MX_B-STM Series Venturi Mixer and Fuel Control Valve Assemblies			
MXSB##-STM	Size 20 - 30, Small Bore, T1 Bolt Pattern / MXSB20-STM, MXSB22-STM, MXSB24-STM, MXSB26-STM, MXSB28-STM, MXB30-STM		
MXMB##-STM	Size 40 - 50, Medium Bore, T2 Bolt Pattern / MXMB40-STM, MXMB42-STM, MXMB44-STM, MXMB46-STM, MXMB48-STM, MXMB50-STM		
MXLB##-STM	Size 75 - 85, Large Bore, T3 & T4 Bolt Pattern / MXLB75-STM, MXLB85-STM		
Fuel Valve Only			
VFC103	Inline Stepper Fuel Control Valve Assy - 5/8 in. [15.88mm] Fittings / Use with MX Series or Aftermarket Mixers		
VFC105	Inline Stepper Fuel Control Valve Assy - 3/4 in. [19.05mm] Fittings / Use with MX Series or Aftermarket Mixers		
VFC106	Inline Stepper Fuel Control Valve Assy - 1 in. [25.4mm] Fittings / Use with MX Series or Aftermarket Mixers		
Shutoff Solenoids			
SOS100	12 or 24 VDC/ 0.75 in [19.05mm] NPT Fittings / Direct Acting / Pres. Dif. 0-3 PSI (0-0.2 Bar)		
SOS101	12 or 24 VDC/ 1.0 in [25.4mm] NPT Fittings / Pilot Operated / Pres. Dif. .015-3 PSI (0.001-0.2 Bar)		
SOS102	12 or 24 VDC/ 1.0 in [25.4mm] NPT Fittings / Direct Acting / Pres. Dif. 0-0.75 PSI (0-0.05 Bar)		
SOS103	12 or 24 VDC/ 1.5 in [38.1mm] NPT Fittings / Pilot Operated / Pres. Dif. .015-3 PSI (0.001-0.2 Bar)		
Engine Monitoring Sensors		Manifold Absolute Pressure Sensors	
SPO100	Oil Pressure Sensor, 150 PSI, 2 Terminal, Ring Posts	SPM200-1B	MAP, 1-Bar
STC101	Coolant Temperature Sensor, 250°F, Spade Terminals	SPM201-2B	MAP, 2-Bar
STE101	Exhaust Gas Temperature Sensor, Type K Thermocouple with Connectors	SPM202-3B	MAP, 3-Bar
Gaseous Filters		Manifold Absolute Pressure Sensors	
GF6066	.75 in 15 PSI (1Bar) Max Inlet Pressure	SOX102	12VDC / Narrow-Band Stoichiometric Operation / Built-In Heater / 4-Terminal
GF6088	1 in 15 PSI (1Bar) Max Inlet Pressure		
GF801212	1.5 in 15 PSI (1Bar) Max Inlet Pressure	SOX103	Multi-VDC / Narrow-Band Stoichiometric Operation / 2-Terminal
KTGF60	Replacement Filter & Hardware / 6066 & 6088		
KTGF80	Replacement Filter & Hardware / 801212		
Zero Pressure Gas Regulators			
RPR102	Maxitrol R500Z - 0.75 in. Fittings / Pi 0.5 PSI Max / Po -1.0 in. to 2.5 in. w.c. / Zero Governor		
RPR103	Maxitrol R600Z - 1 in. Fittings / Pi 1.0 PSI Max / Po -1.0 in. to 1.5 in. w.c. / Zero Governor		
RPR104	Maxitrol 210DZ - 1 in. Fittings / Pi 5.0 PSI Max / Po -1.0 in. to 1.5 in. w.c. / Zero Governor		
RPR105	Maxitrol 210DZ - 1.5 in. Fittings / Pi 5.0 PSI Max / Po -1.0 in. to 1.5 in. w.c. / Zero Governor		
RPR210EZ	Maxitrol 210EZ - 1.5 in Fittings / Pi 5.0 PSI Max / Po -1.0 in. to 3.0 in. w.c. / Zero Governor		
RPR-RV61	Maxitrol RV61 - 1 in Fittings / Pi 1.0 PSI Max / Po 1.0 in. to 3.0 in. w.c. / Straight-Thru-Flow		
RPR-RV81	Maxitrol RV81 - 1.5 in Fittings / Pi 1.0 PSI Max / Po 3.0 in. to 8.0 in. w.c. / Straight-Thru-Flow		



## AFR200 ACCESSORIES



AFR Series Connector Kits & Harnesses



Fuel Valve Connector Kit

AFR200 Series Mating Connector Kits & Harnesses	
EC1501	AFR200 Series, Connector 1, 35-Terminal (All)
EC1502	AFR200 Series, Connector 2, 14-Terminal (201/211 Only)
CH1519	AFR200 Series, Harness Kit, 35-Terminal, Flying Leads (All)
CH1520	AFR200 Series, Harness Kit, 14-Terminal, Flying Leads (201/211 Only)

MX Series Fuel Valve Mating Connector Kit	
EC1507	MX Series Stepper Motor, 4-Terminal

Oxygen Sensor Mating Connector Kits	
EC1508	SOX102, 12V, 4-Terminal
EC1520	SOX103, 24V, 2-Terminal

Manifold Abs. Pressure Sensor Mating Connector Kits	
EC1509	SPM200-1B, Green, 3-Terminal
EC1510	SPM201-2B, Orange, 3-Terminal
EC1511	SPM202-3B, Black, 3-Terminal



Oxygen Sensor Connector Kits



Absolute Pressure Sensor Connector Kits

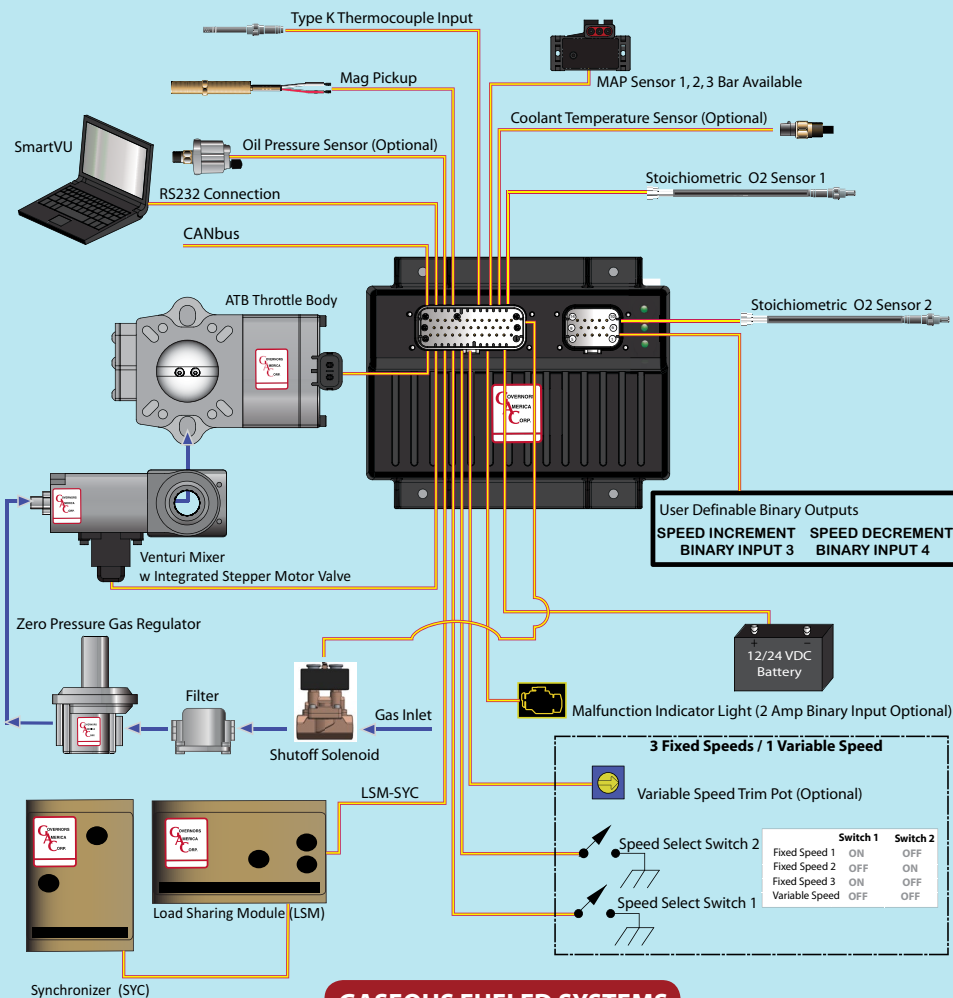
## Lean Burn for the AFR

The GAC KT317WB-AFR, ready to use lean burn adapter kit for the FIMS500 AFR2XX Series controllers determines how rich or lean an engine is running at any load and compensates for changes in temperature and sensor condition. Performance and operational settings are adjusted and viewed in "real time" using GAC's SmartVU software.

- 12 or 24 VDC
- 0.8 to 1.5  $\lambda$  Range
- Plug and Play Lean Burn Solution
- Wide Band Bosch LSU4.2 Sensor Included
- Accurate Wideband to Narrow Band Conversion



KT317WB-AFR-12 or -24	Lean Burn Adapter Kit Includes the Parts Below
EAM212	Lean Burn Adapter
CH1523	EAM212 Lean Burn Adapter Controller Harness
SOX104	O2 Sensor Assembly, LSU4.2
HW11-025	Installation Spacer, Threaded, for SOX104 O2 Sensor Assembly
PCI106	DC/DC Converter (24V Version Only)



# Fuel and Ignition Management System (FIMS)

## ICM200 Series



- Up to 8 Cylinders Sequential or 16 Cylinders Wasted Spark
- Supports Camshaft / Crankshaft Engine Position Sensors
- Fixed or Variable Timing or With In-Field Global Trim Capability
- Two Optional Variable Timing Maps

Prod. No.	Description
ICM200-4	4 Output Channels Maximum
ICM200-6	6 Output Channels Maximum
ICM200-8	8 Output Channels Maximum



Spark Plugs & Wires



Timing Trigger Wheels



Engine Position Sensors



Ignition Coils

Spark Plugs & Wires	
SPG100-002	Spark Plug / Turbocharged Lean Burn or Stoichiometric Applications
SPW100	Single Ignition Wire Lead, High Performance
Timing Trigger Wheels	
GR104	24-1, 68mm, Trigger Wheel
Engine Position Sensors	
SCI100	Variable Reluctance / 90° Connector
SCI101	Variable Reluctance / Straight Connector
SCI102	Hall Effect / Pigtail Connector
SCI103	Hall Effect / 90° Connector
Ignition Coils	
CL600	Single Output, Sequential Firing / 12 or 24V
CL601	Dual Output, Wasted-Spark Firing / 12 or 24V
CL602	Single Output, Sequential Firing / 12V Only
CL603	Dual Output, Wasted-Spark Firing / 12V Only

## ICM ACCESSORIES



ICM200 Connector Kits & Harnesses

ICM200 Series Mating Connector Kit & Harnesses	
EC1500	ICM200 Series, 35-Terminal
CH1521	ICM200 Series, Harness Kit, 35-Terminal, Flying Leads



Ignition Coil Connector Kits

Ignition Coil Mating Connector Kits	
EC1504	CL602, 2-Terminal
EC1517	CL601, 3-Terminal

Engine Position Sensor Mating Connector Kits	
EC1503	SCI102, 3-Terminal
EC1504	SCI100, 2-Terminal
EC1518	SCI101, 2-Terminal
EC1519	SCI103, 3-Terminal



Engine Position Sensor Connector Kits

NOTE: Custom Ignition Coil Rails and Distributor Cap Drop-In Upgrades Available.

## MISCELLANEOUS ACCESSORIES



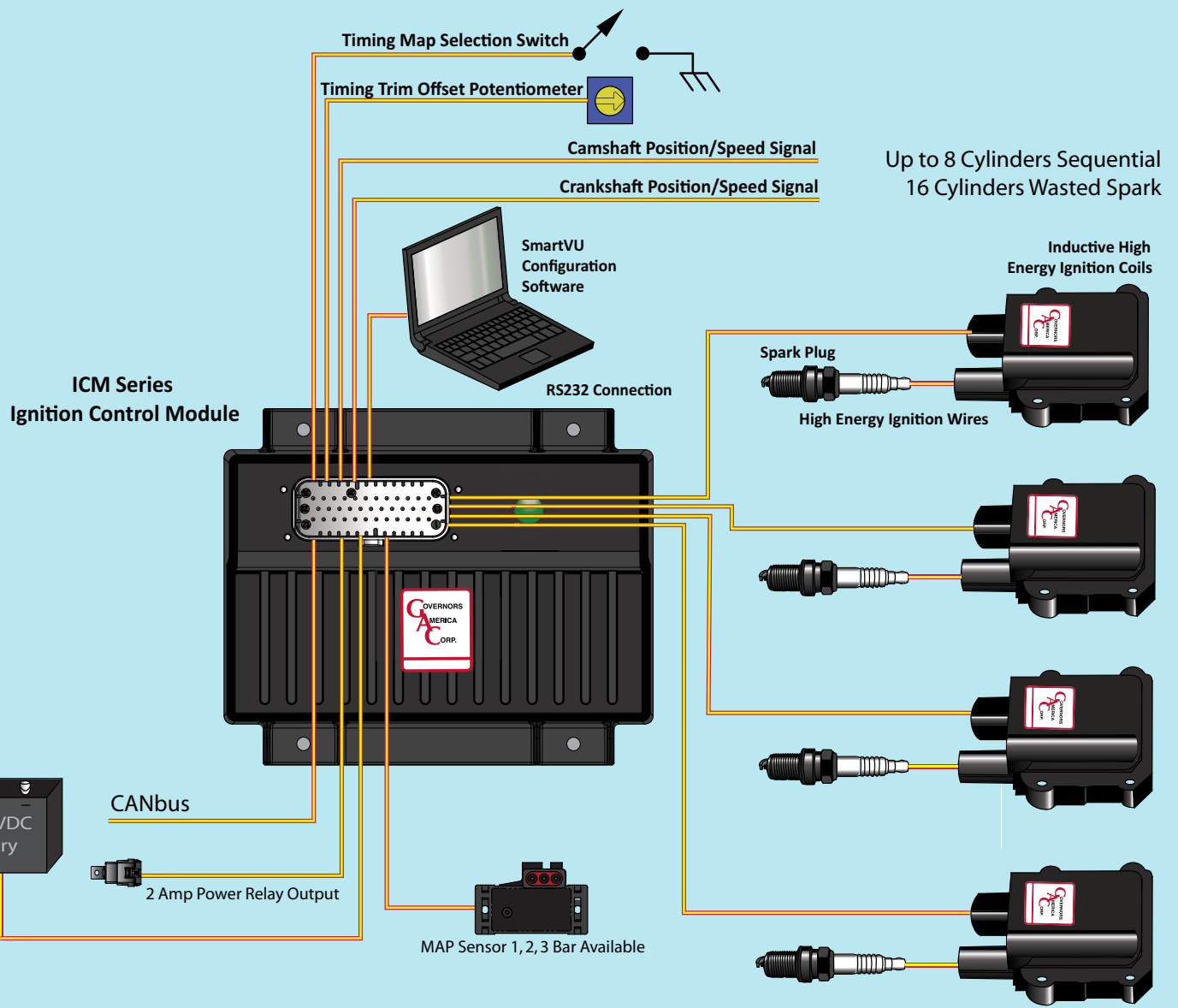
Power Relays

Power Relays	
RLY02-1009	12V, Normally Open
RLY02-1011	24V, Normally Open

Miscellaneous Component Connector Kits	
EC1505	Fuse Holder, 2-Terminal
EC1506	Relay Holder, 5-Terminal
EC1516	Serial Port DB9-F, 9-Terminal



Misc. Component Connector Kits





**Governors America Corp.**  
**720 Silver Street**  
**Agawam, MA 01001, USA**  
**T: +1 413.233.1888**  
**F: +1 413.789.7736**  
**[www.governors-america.com](http://www.governors-america.com)**  
**[GAC@governors-america.com](mailto:GAC@governors-america.com)**

